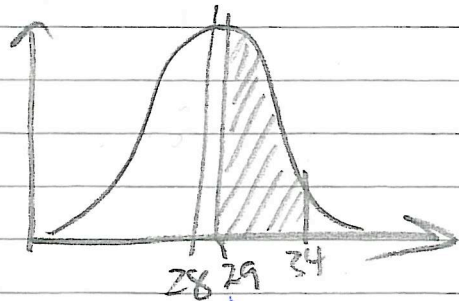


Sigma Ed. 3 Ex 17.01

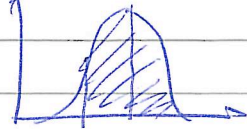
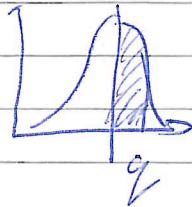
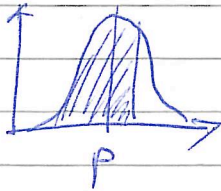
Q3 (d)

$$\mu = 28, \sigma = 5$$

$$P(29 < X < 34)$$



from



Can solve by difference of either P or R functions

$$Z_{29} = \frac{29-28}{5}$$

$$Z_{34} = \frac{34-28}{5}$$

$$= 0.2$$

$$= 1.2$$

Use Q,

$$Q(1.2) - Q(0.2) = 0.305671$$